



PRECISION

DUAL LATEROLOG - GR

DENSITY - NEUTRON

Compact

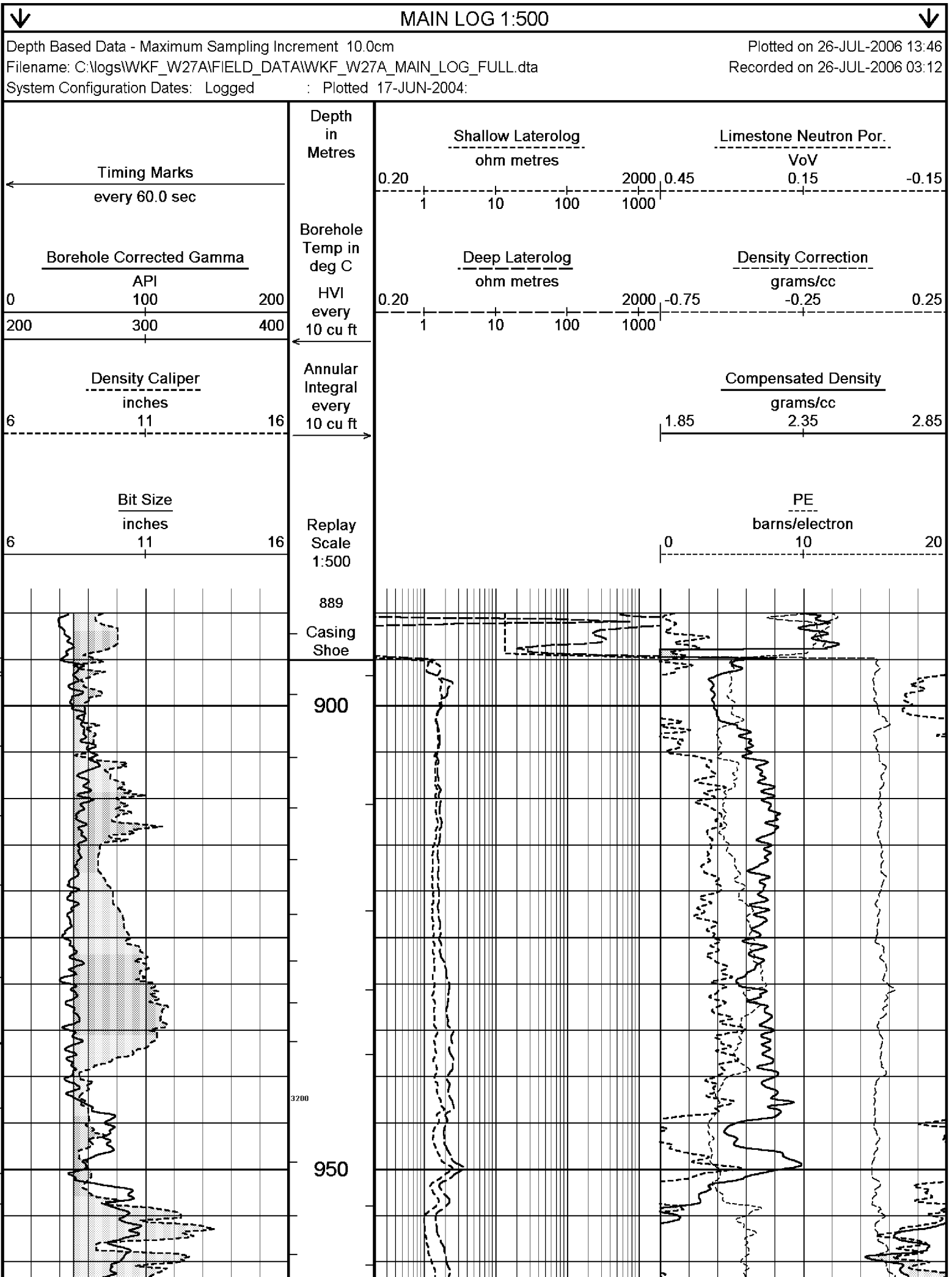
1:500 MD

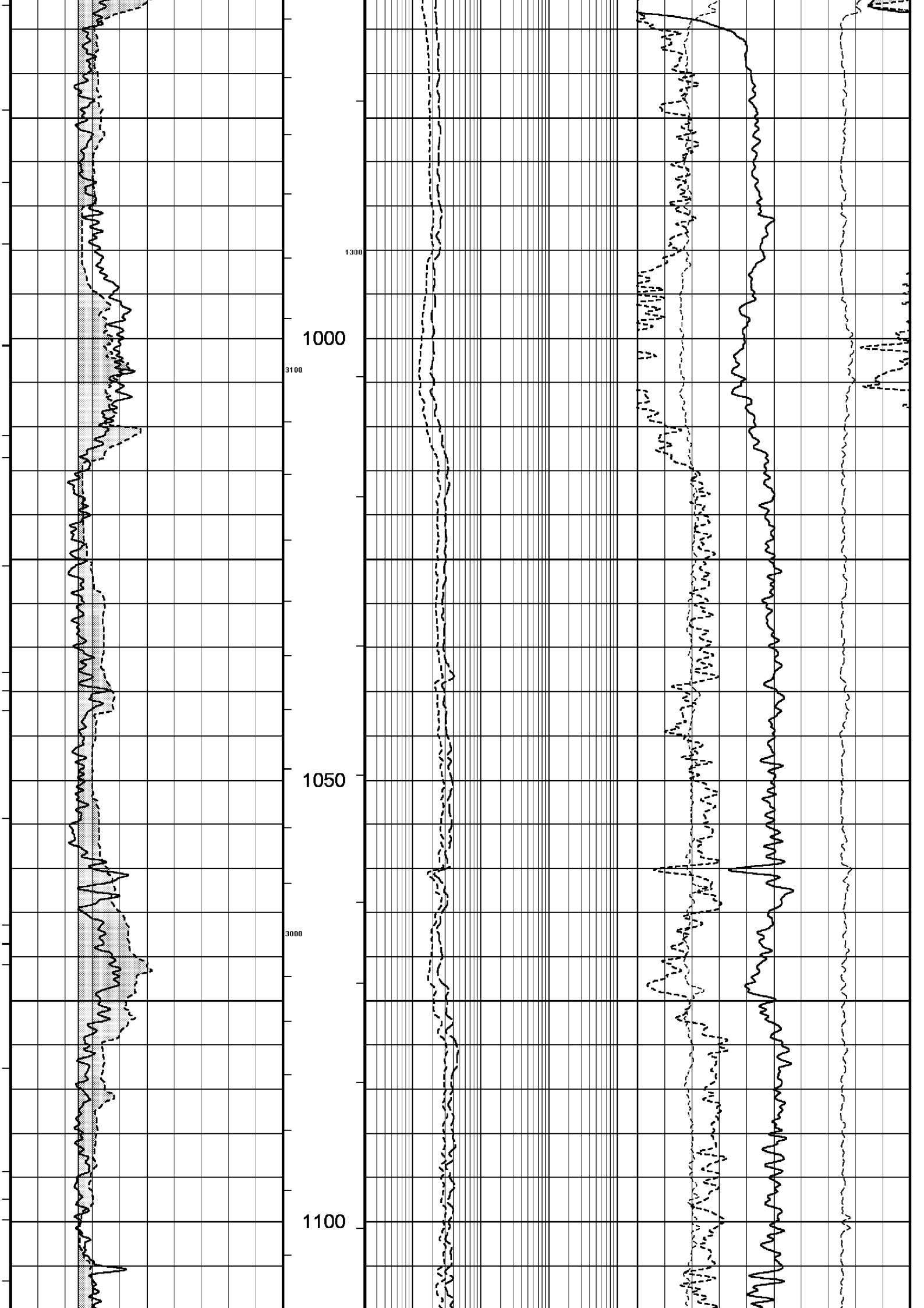
COMPANY				ESSO AUSTRALIA PTY.LTD			
WELL				WKF W27A			
FIELD				KINGFISH GDA94			
PROVINCE/COUNTRY				BASS STRAIT, VICTORIA			
COUNTRY/STATE				AUSTRALIA			
LOCATION				S 38 35 34.851, E 148 6 20.022			
				N 5727806.021 m, E 596279.875 m			
				FIELD PRINT			
LSD	SEC	TWP	RGE	Other Services			
				COMPENSATED SONIC			
API Number							
Permit Number							
Permanent Datum MSL				, Elevation 0.0		metres	
Log Measured From DF @ 33.43m				above Permanent Datum			
Drilling Measured From DF							
Date	26-JUL-2006						
Run Number	ONE						
Depth Driller	3093.00			metres			
Depth Logger	3093.00			metres			
First Reading	3090.00			metres			
Last Reading	895.00			metres			
Casing Driller	895.00			metres			
Casing Logger	895.00			metres			
Bit Size	8.50			inches			
Hole Fluid Type	KCL/PHPA						
Density / Viscosity	1.16 g/cc		26.00 CP				
PH / Fluid Loss	9.50		2.80 ml/30Min				
Sample Source	FLOWLINE						
Rm @ Measured Temp	0.105 @ 25.0			ohm-m			
Rmf @ Measured Temp	0.08 @ 25.0			ohm-m			
Rmc @ Measured Temp	0.081 @ 25.0			ohm-m			
Source Rmf / Rmc	MEAS		MEAS				
Rm @ BHT	0.046 @ 87.1		ohm-m				
Time Since Circulation	28 HOURS						
Max Recorded Temp	93.80		deg C				
Equipment Name	CML						
Equipment / Base	1		SALE				
Recorded By	R L TENCH, B J R MOSS						
Witnessed By	T LOBO						
LAST CIRC.	12:25 24/07			Last Line			

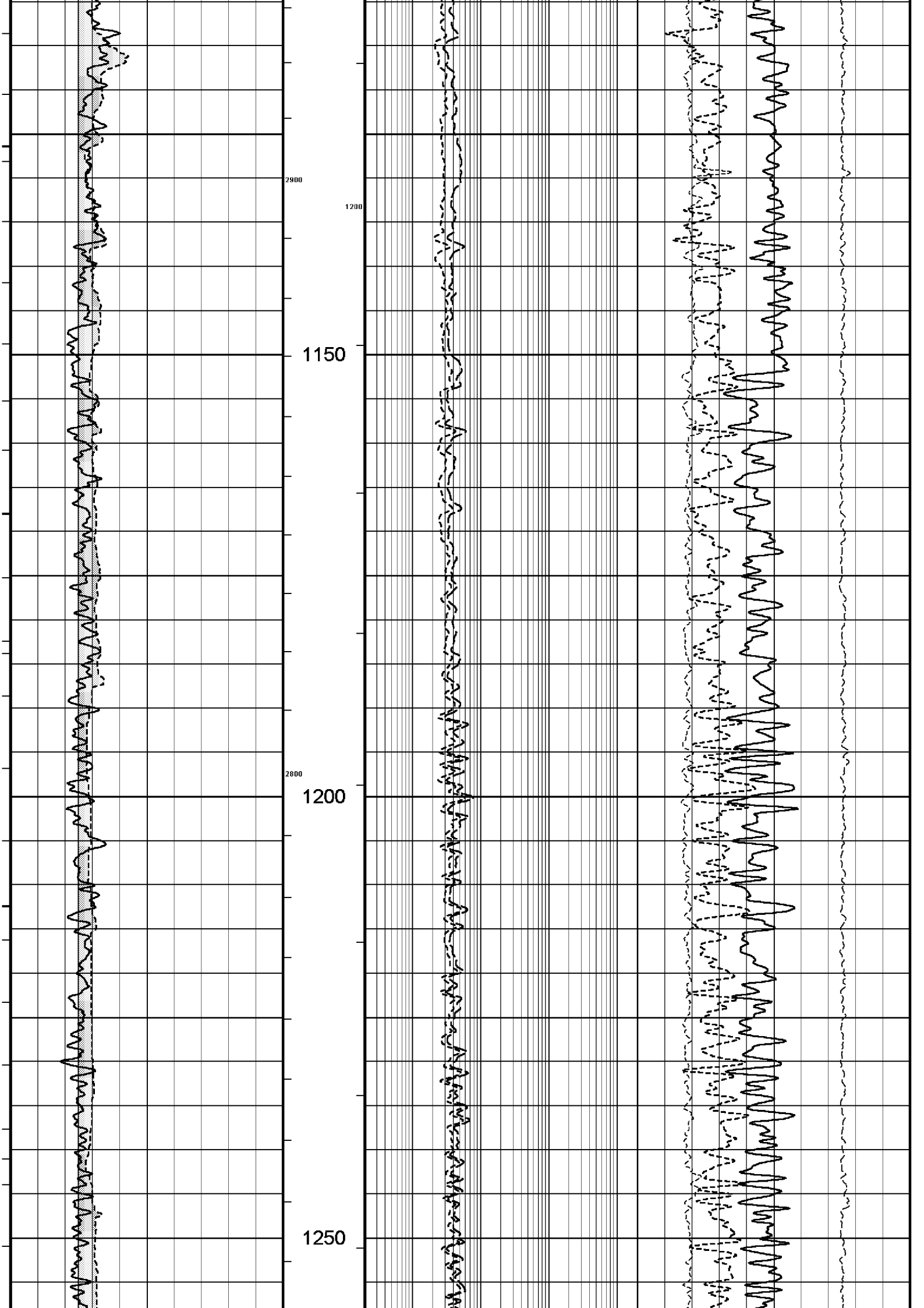
BOREHOLE RECORD			
Bit Size inches		Depth From metres	Depth To metres
8.500		895.00	3095.00
CASING RECORD			
Type	Size inches	Depth From metres	Shoe Depth metres
K-55	10.750	0.00	895.00
Weight pounds/ft			
40.50			

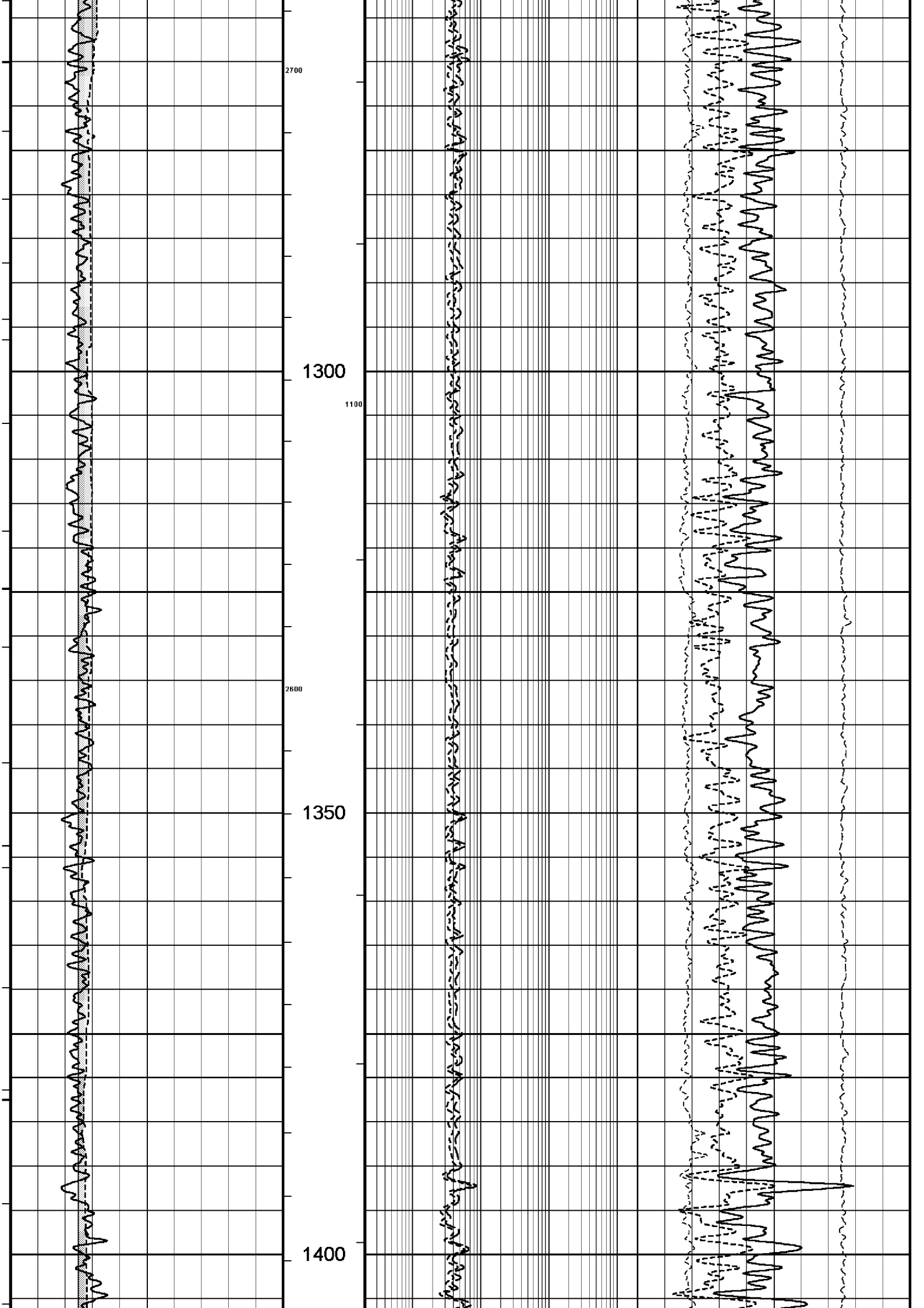
REMARKS
RIG: NABORS 453
5" SHUTTLE/MEMORY COMPACT OPERATION. CREW: R TENCH , B MOSS , J.BLESSING, M KOLCZE.
FIELD FINAL LOGS TO BE CORRELATED TO ANADRILL GAMMA LOG.
MAX. TEMPERATURE: 93.8 DEG C AT 3041m MD MAX. INCLINATION: 46.10 DEG AT 3095 m MD MAX. DOGLEG SEVERITY: 5.03 DEG/30m AT 993.08 m MD DEPLOYMENT ANGLE: 46.10 DEG
HVOL: 3285 FT^3 AVOL: 1382 FT^3
LOGGING SPEED 6M/MIN FROM TD TO 2791.52 M MD LOGGING SPEED 12 M/MIN FROM 2791.52 TO 1297.42 M MD LOGGING SPEED 6 M/MIN FROM 1297.42 TO 1125.7 M MD LOGGING SPEED 12 M/MIN FROM 1125.7 TO 866.87 M MD
BRIDGED OFF AT 2364M MD, REQUIRED 3BBLs FLOW TO PASS BRIDGE.

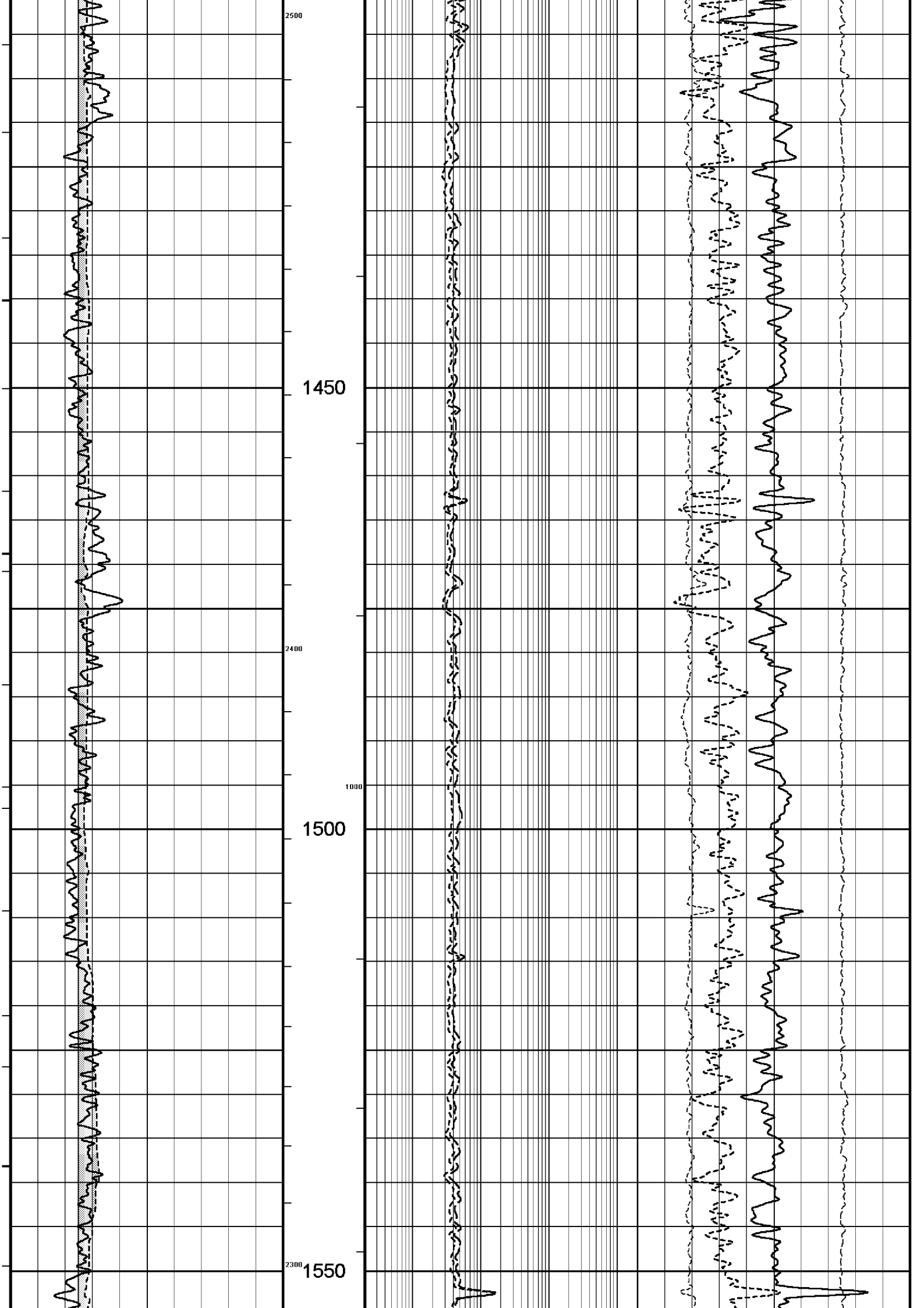
All interpretations are opinions based on inferences from electrical or other measurements and we cannot, and do not, guarantee the accuracy or correctness of any interpretations, and we shall not, except in the case of gross or wilful negligence on our part, be liable or responsible for any loss, costs, damages or expenses incurred or sustained by anyone resulting from any interpretation made by any of our officers, agents or employees. These interpretations are also subject to our general terms and conditions in our price schedule.

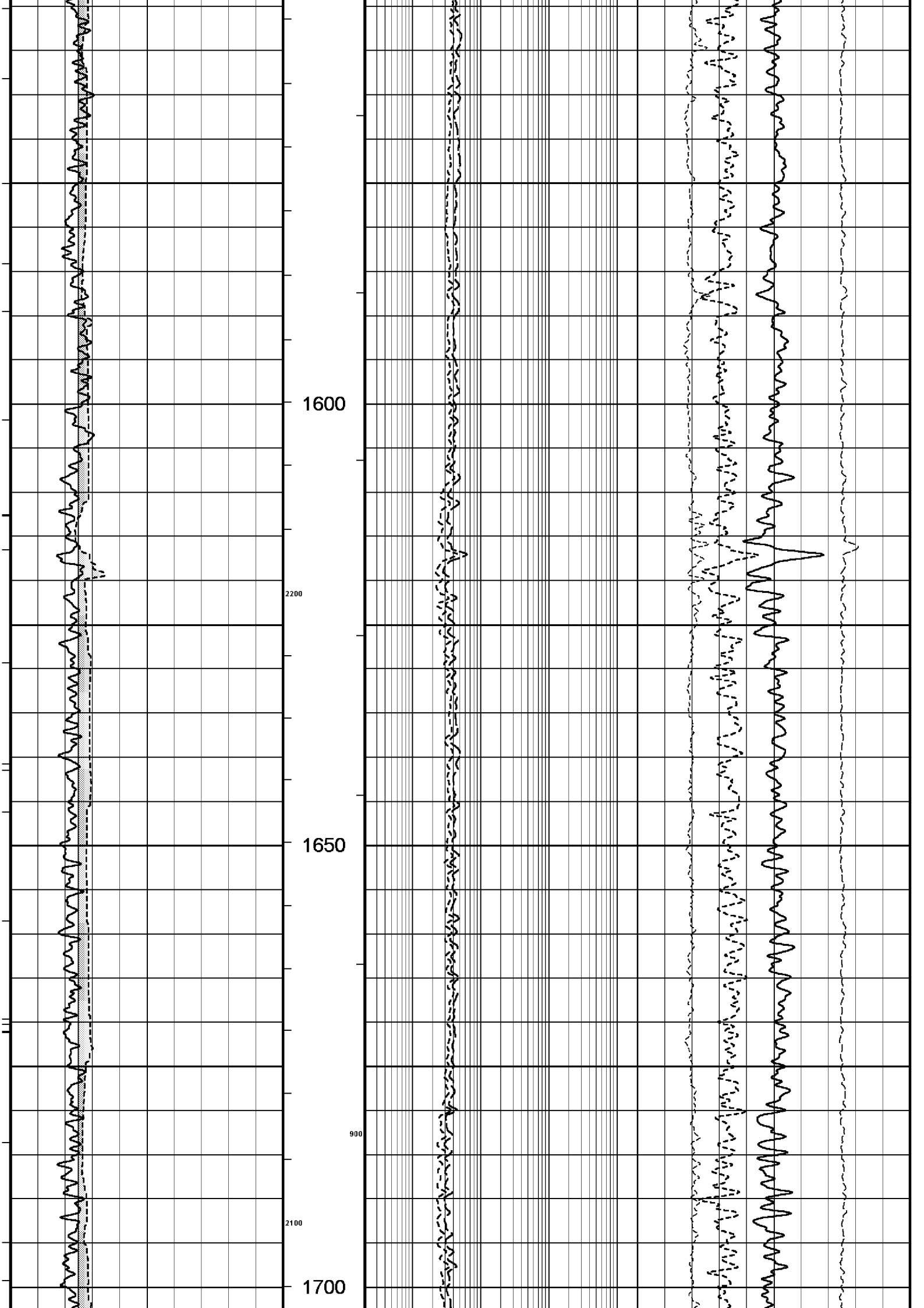


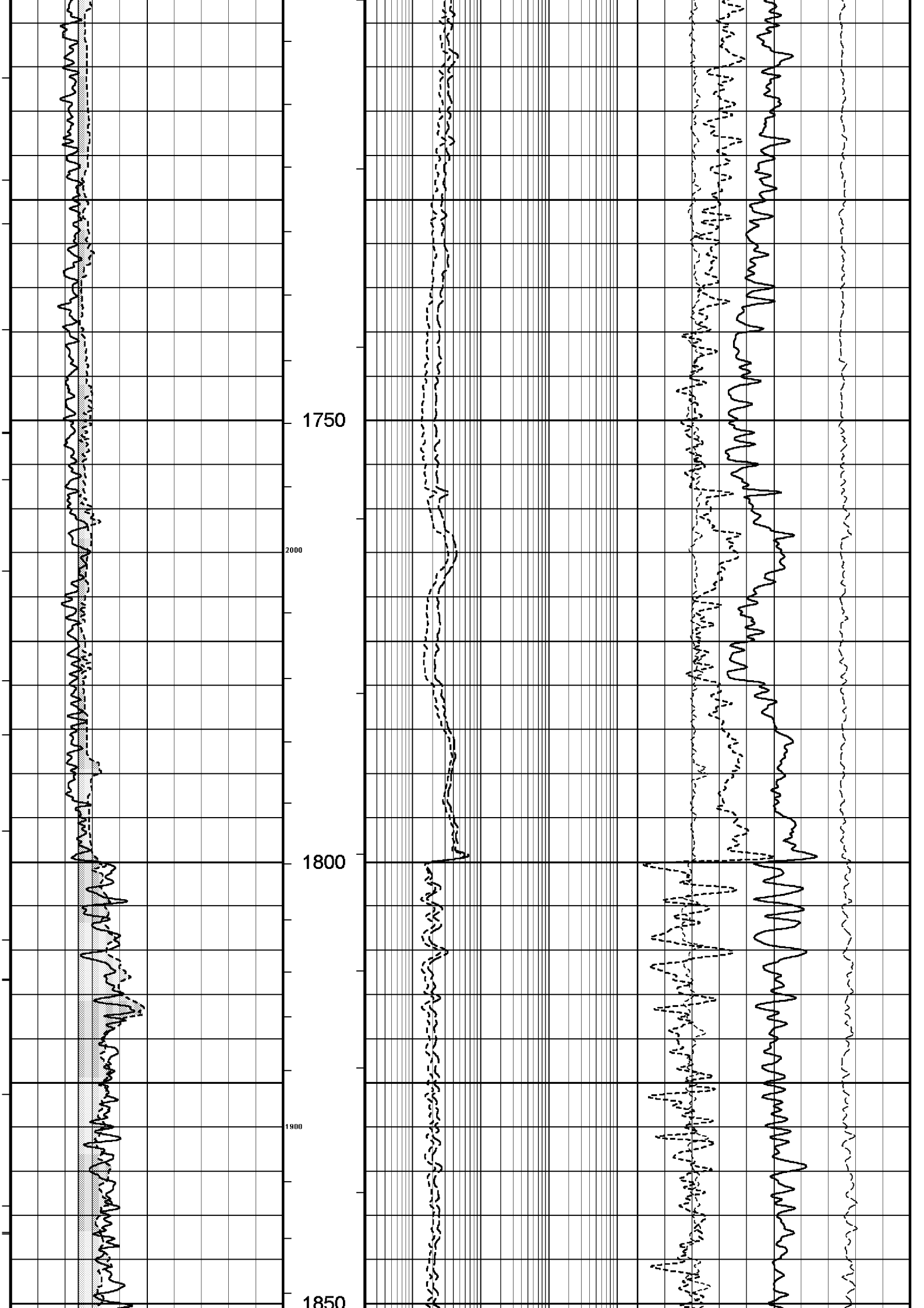


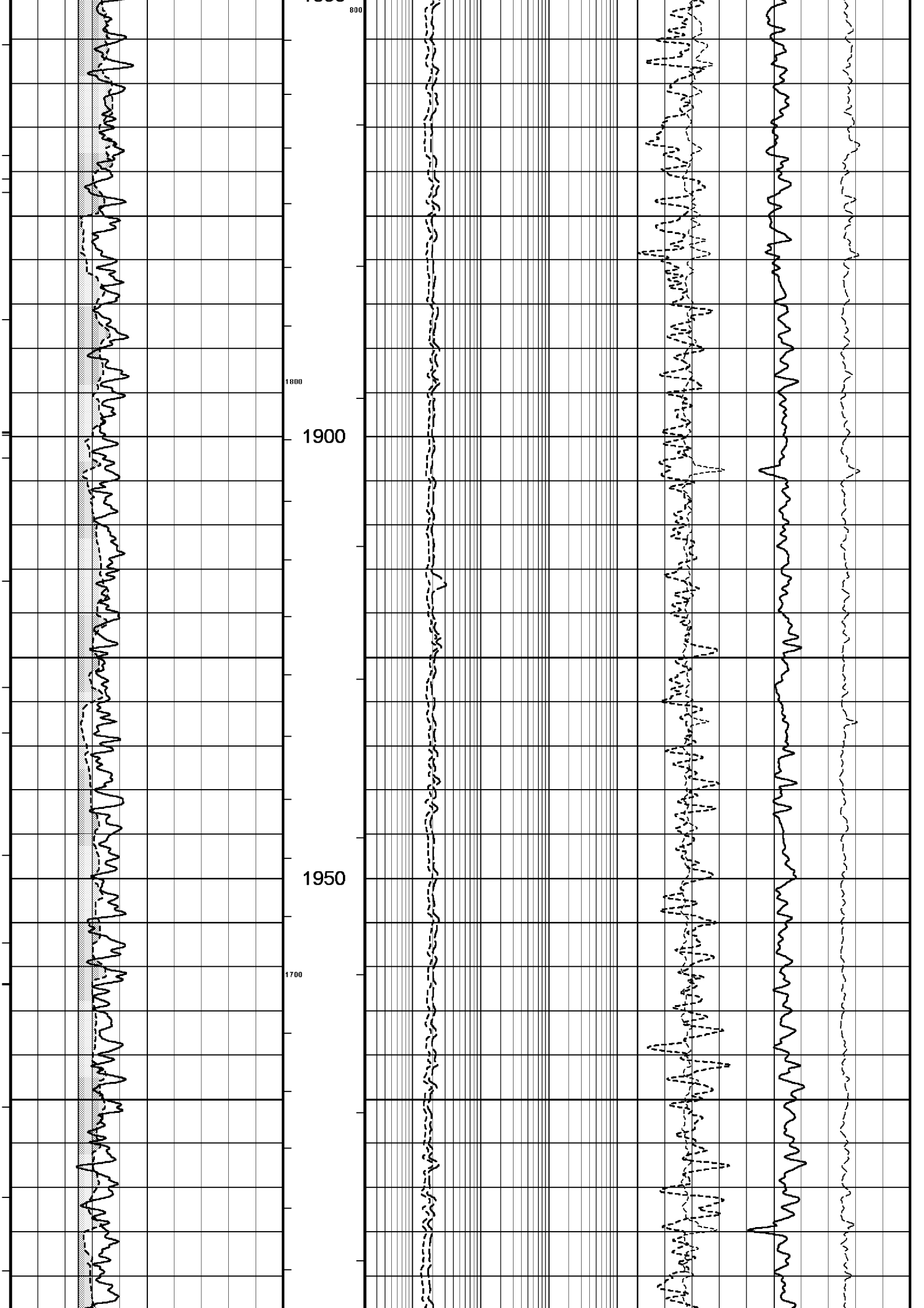


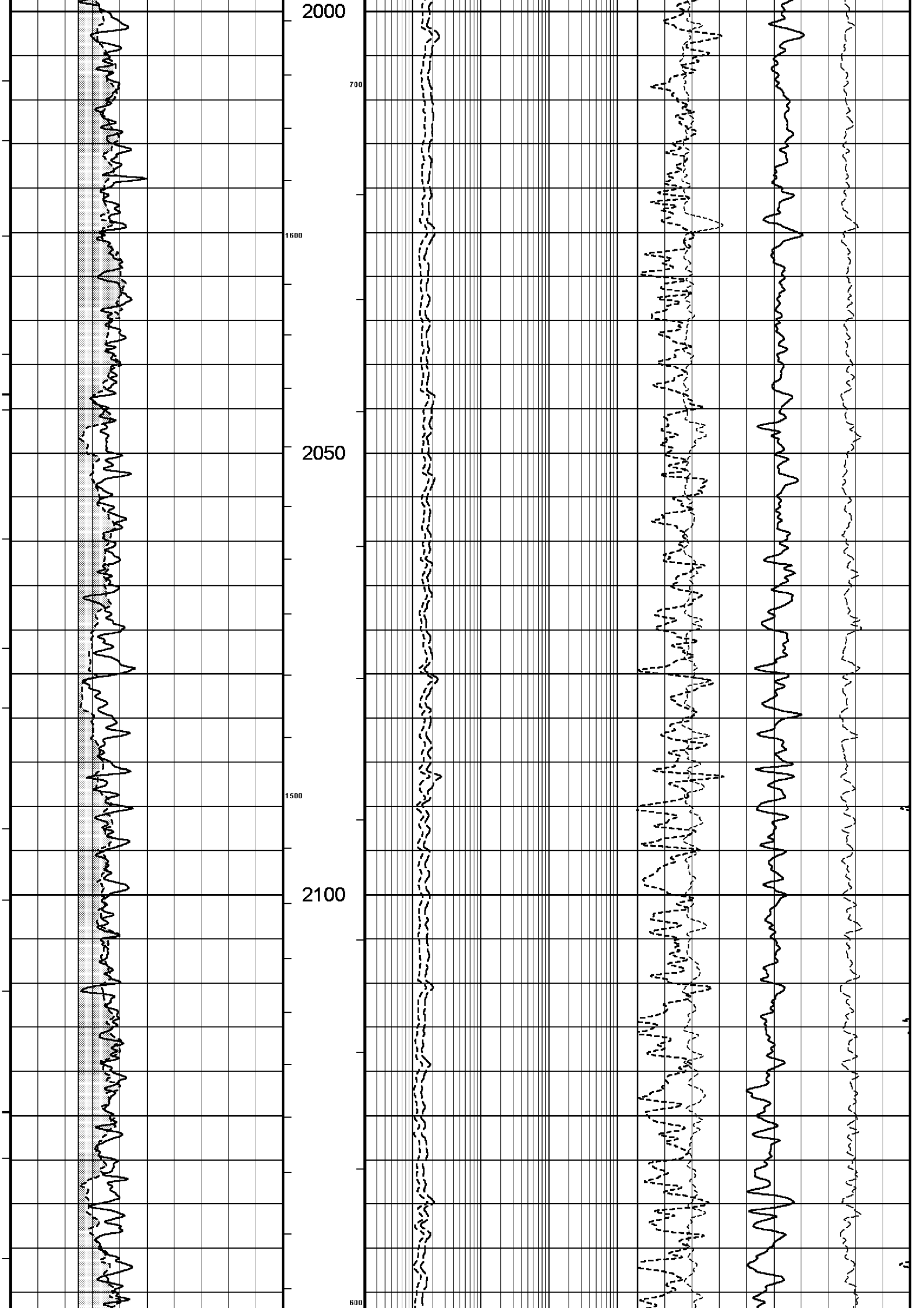


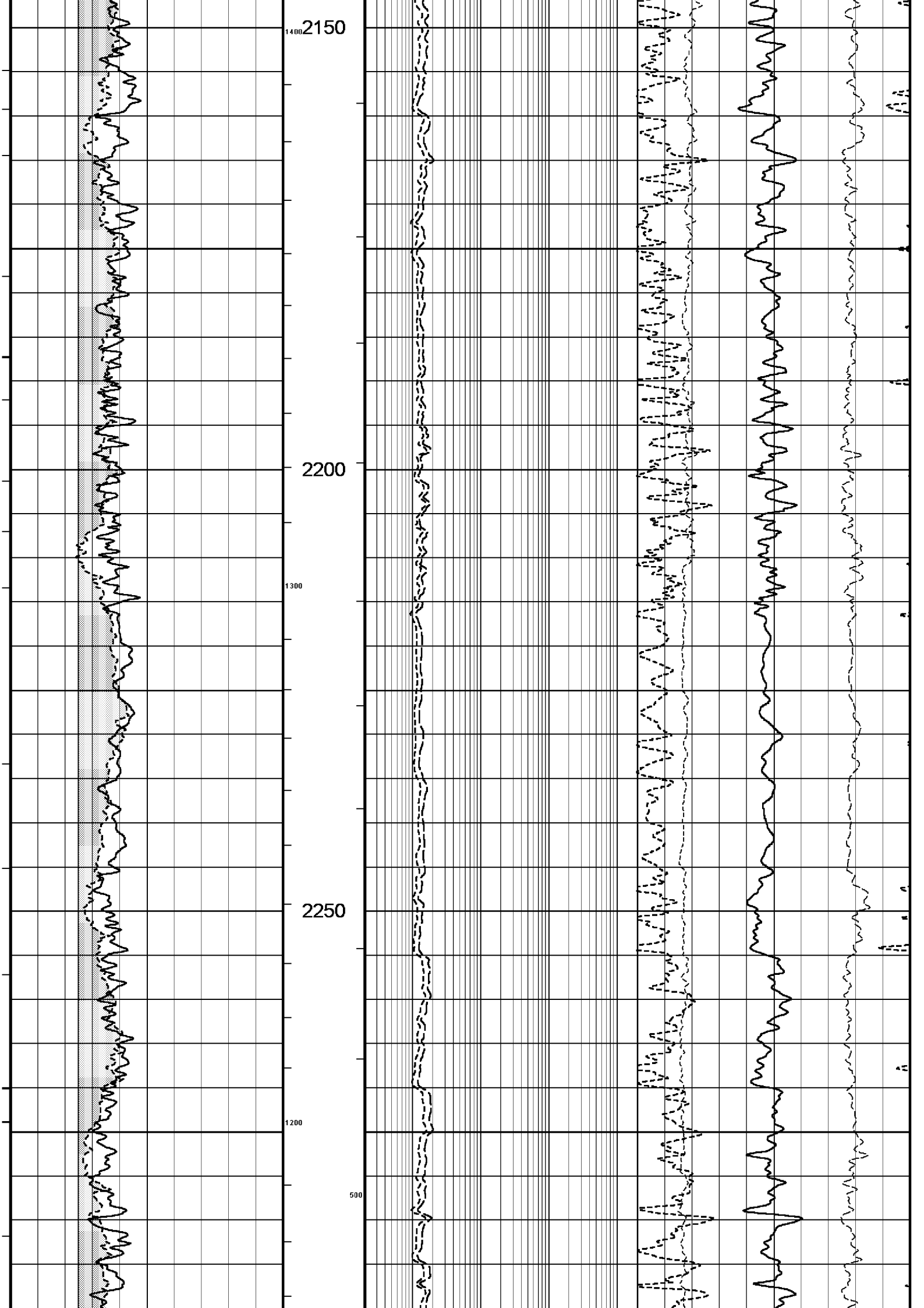


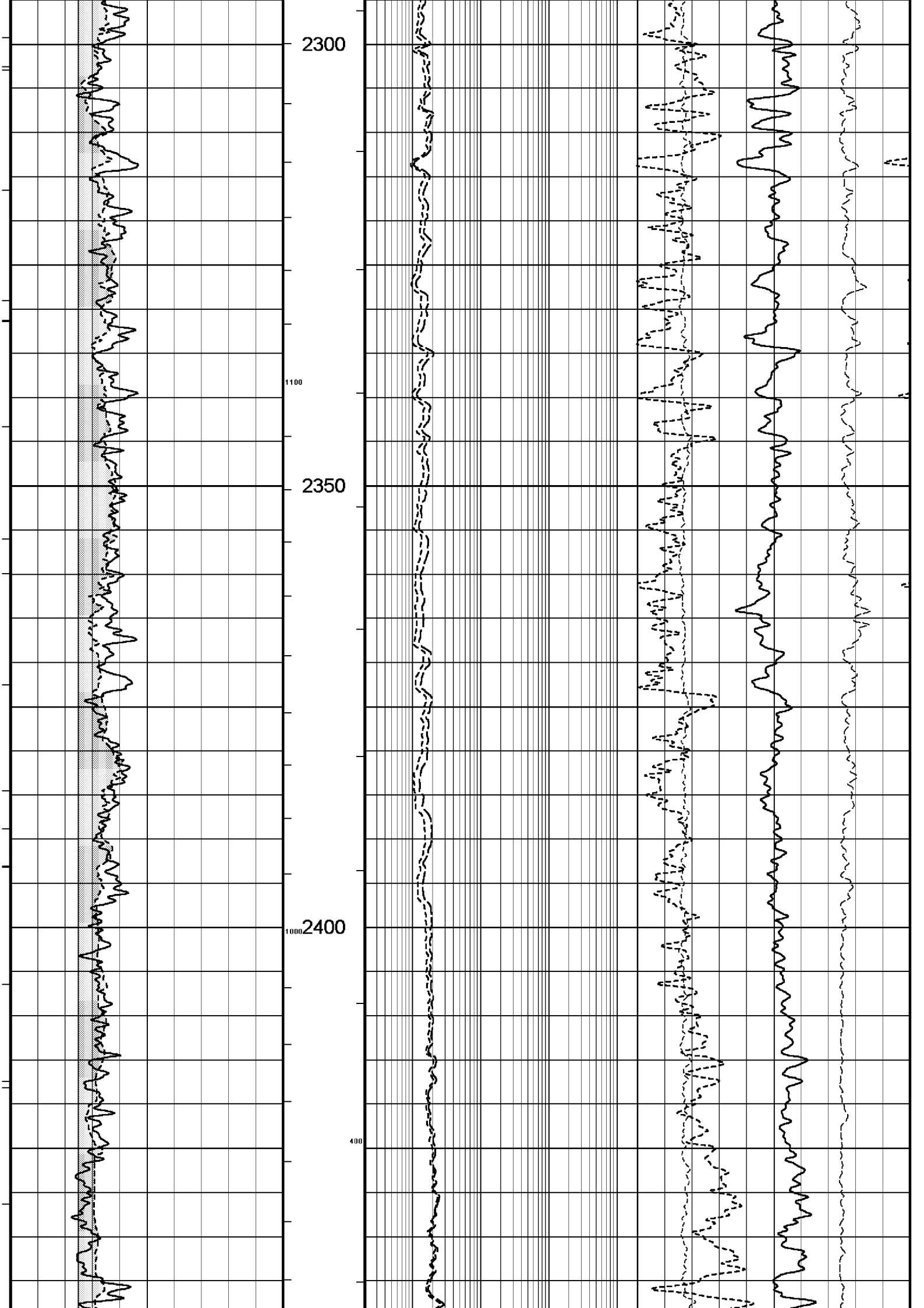


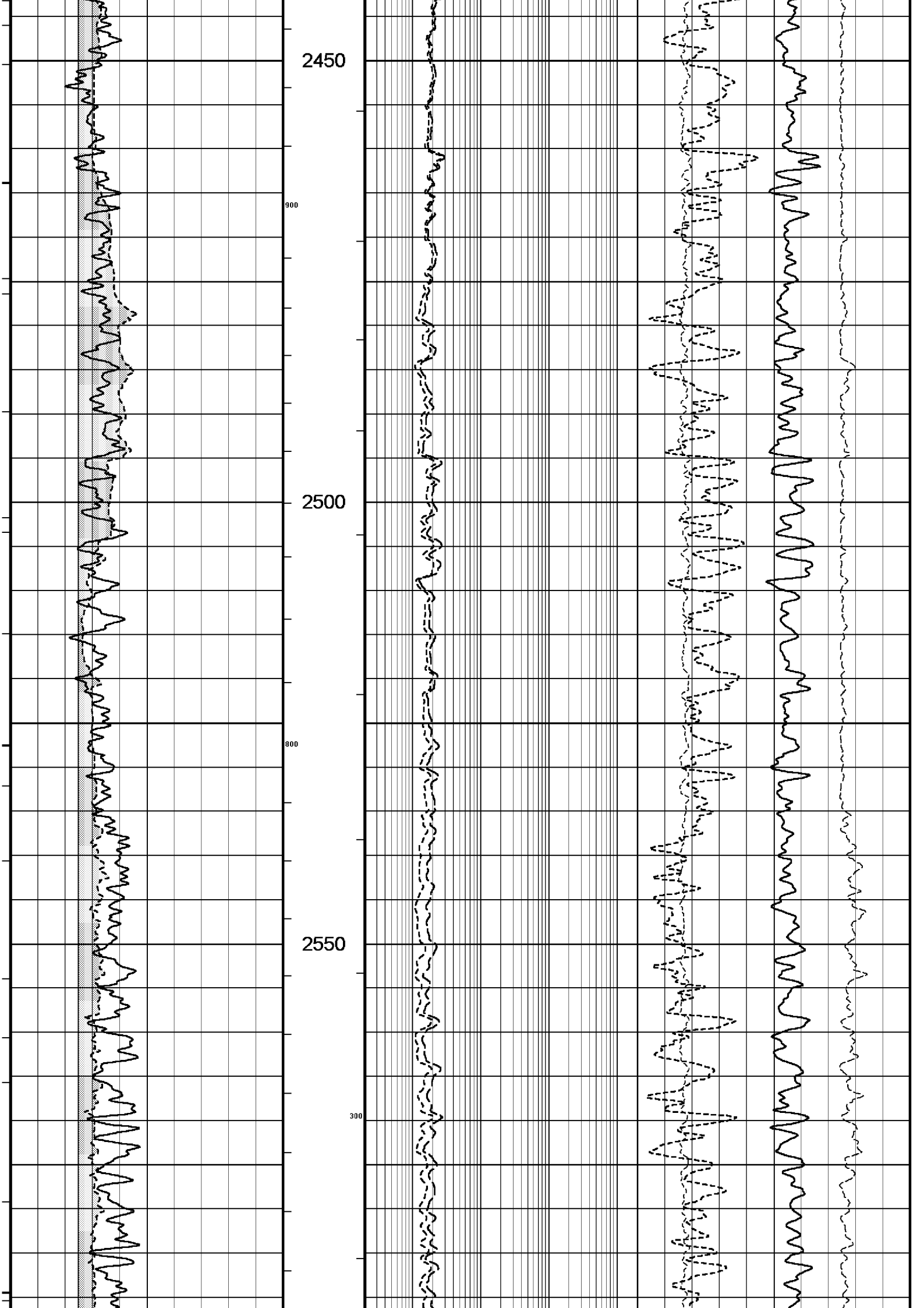


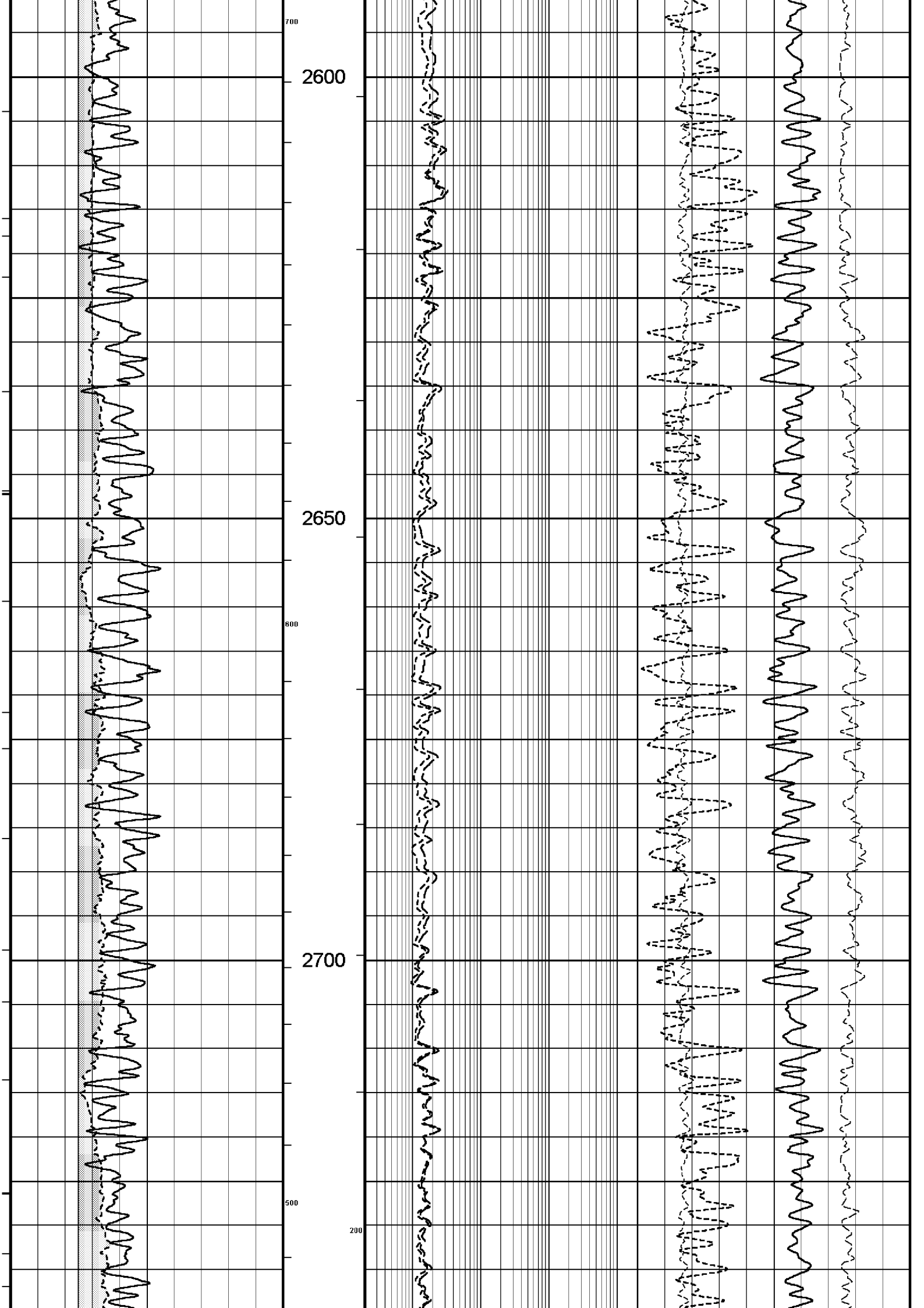


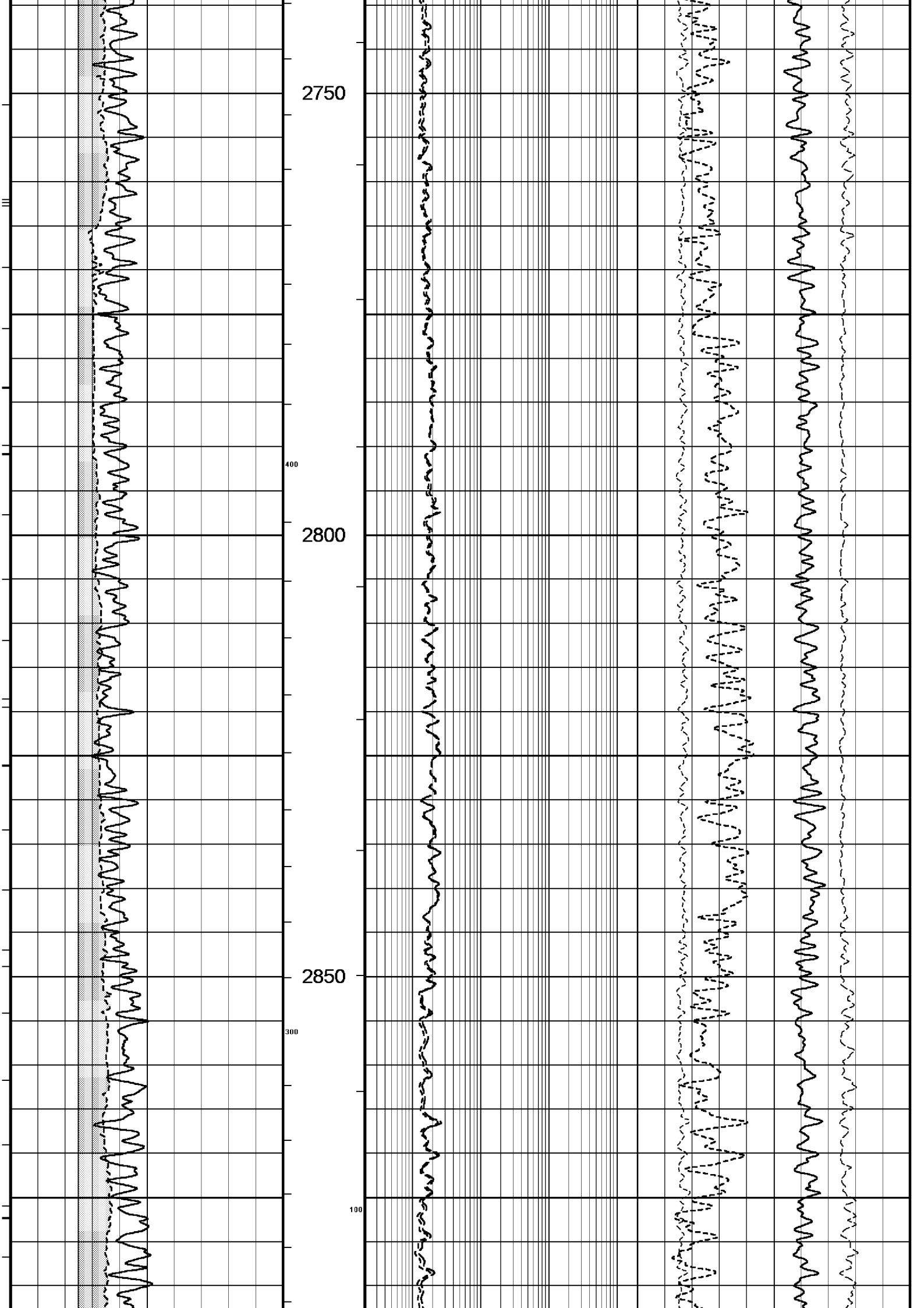


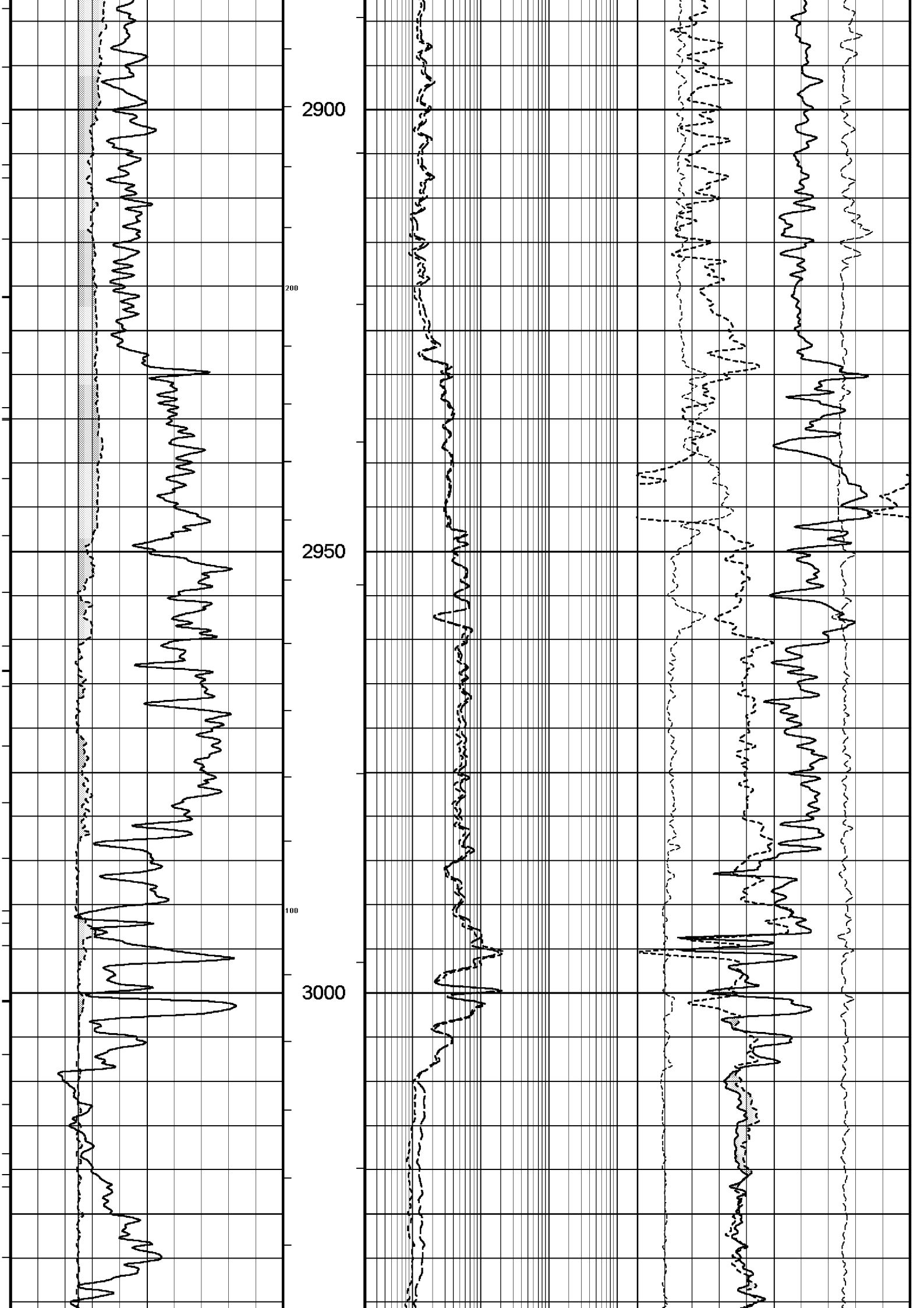












Mud Resistivity Temperature	20.000	degrees C
Water Level	0.000	metres
Density/Neutron Processing	Wet Hole	
Hole/Annular Volume and Differential Caliper Parameters		
HVOL Caliper 1	Density Caliper	
HVOL Caliper 2	Density Caliper	
Annular Volume Diameter	7.000	inches
Caliper for Differential Caliper	None	
Rwa Parameters		
Porosity used	Base Density Porosity	
Resistivity used	Deep Induction	
RWA Constant A	0.610	
RWA Constant M	2.150	

High Resolution Temperature Calibration MCG 142			Field Calibration on 21-JUN-2006,15:43
	Measured	Calibrated(Deg C)	
Lower	0.00	0.00	
Upper	100.00	100.00	

High Resolution Temperature Constants MCG 142		
Pre-filter Length	11	

Gamma Calibration MCG 142			Field Calibration on 24-JUL-2006 01:45
	Measured	Calibrated (API)	
Background	22	15	
Calibrator (Gross)	1363	924	
Calibrator (Net)	1341	909	

Gamma Constants MCG 142		
Gamma Calibrator Number	60	
Mud Density	1.16	gm/cc
Caliper Source for Processing	Density Caliper	
Tool Position	Eccentred	
Concentration of KCl	0.00	kppm

Neutron Calibration MDN 085			Base Calibration on 19-JUL-2006 16:31
Base Calibration			Field Check on 24-JUL-2006 02:09
	Measured	Calibrated (cps)	
	Near Far	Near Far	
	3105 96	3714 110	
Ratio	32.405	33.764	
Field Calibrator at Base			Calibrated (cps)
		1634 2400	
Ratio		0.681	
Field Check			Calibrated (cps)
		1575 2369	
Ratio		0.665	

Neutron Constants MDN 085		
Neutron Source Id	NSN-E-739	
Neutron Jig Number	NEC-E-052	
Epithermal Neutron	No	
Caliper Source for Processing	Bit Size	
Stand-off	0.00	inches
Mud Density	1.16	gm/cc
Limestone Sigma	7.10	cu
Sandstone Sigma	4.26	cu
Dolomite Sigma	4.70	cu
Formation Pressure Source	None	
Formation Pressure	N/A	kpsi
Temperature Source	MCG External Temperature	
Temperature	N/A	degrees C
Mud Salinity	64.90	kppm
Formation Fluid Salinity Source	None	
Formation Fluid Salinity	N/A	kppm
Barite Mud Correction	Not Applied	

Caliper Calibration MPD 083			Base Calibration on 19-JUL-2006 12:33
-----------------------------	--	--	---------------------------------------

Base Calibration

Reading No	Measured	Calibrator Size (in)
1	15377	4.01
2	22794	5.99
3	31114	7.98
4	39638	9.94
5	48896	12.01
6	N/A	N/A

Field Calibration

Measured Caliper (in)	Actual Caliper (in)
7.98	7.98

Photo Density Calibration MPD 083

Base Calibration on 19-JUL-2006 11:18

Field Check on 24-JUL-2006 01:57

Density Calibration

Base Calibration	Measured		Calibrated (sdu)	
	Near	Far	Near	Far
Reference 1	55597	18484	53111	19310
Reference 2	26161	2451	24951	2530

Field Check at Base

937.1 1075.9

Field Check

934.2 1074.1

PE Calibration

Base Calibration	Measured		Calibrated
	WS	WH	Ratio
Background	176	801	
Reference 1	17753	55402	0.322
Reference 2	6997	26014	0.270

Field Check at Base

176.5 800.7

Field Check

176.6 801.2

Density Constants MPD 083

Density Source Id	NSDL 242
Nylon Calibrator Number	DNC-D-536
Aluminium/Fe Calibrator Number	DAC-D-536
Density Shoe Profile	4 inch
Caliper Source for Processing	Density Caliper
PE Correction to Density	Not Applied
Mud Density	1.16 gm/cc
Mud Density Z/A Correction	1.11
Mud Filtrate Density	1.00 gm/cc
Dry Hole Mud Filtrate Density	1.00 gm/cc
DNCT	0.00 gm/cc
CRCT	0.00 gm/cc

Matrix Density (gm/cc)	Depth (m)
2.71	
0.00	0.00
0.00	0.00
0.00	0.00
0.00	0.00
0.00	0.00
0.00	0.00
0.00	0.00
0.00	0.00

Laterolog Calibration MLE 031

Base Calibration on 17-JUL-2006,15:10

Field Check on 24-JUL-2006,02:22

Base Calibration

Channel	Measured		Calibrated (ohm-m)	
	Resistor 1	Resistor 2	Resistor 1	Resistor 2
Shallow	9.8	976.4	13.2	1321.0
Deep	9.8	976.6	7.5	755.0
Groningen	9.8	976.7	8.5	854.0

Channel	Base Check (ohm-m)	Field Check (ohm-m)
---------	--------------------	---------------------

Shallow	48.6	48.6
Deep	27.8	27.8
Groningen	251.6	251.6

Laterolog Constants MLE 031

Squasher Start	40000	ohm-m
Shallow Laterolog K Factor	1.3210	
Deep Laterolog K Factor	0.7550	
Groningen Laterolog K Factor	0.8540	
Interference Rejection	50 Hz	
SP Connection	SP Bridle Electrode	
Groningen Connection	None	

DOWNHOLE EQUIPMENT

C:\logs\WKF_W27A\FIELD_DATA\WKF_W27A_MAIN_LOG.dta

Compact Swivel Head Adaptor F
SHA 71 Length: 0.83 m Weight: 26.5 lb

Compact Knuckle Joint
SKJ 100 Length: 0.66 m Weight: 24.3 lb

Compact Battery Sub.
MBS 99 Length: 4.41 m Weight: 44.1 lb

Compact Inline Standoff B
MIS 31 Length: 0.65 m Weight: 15.4 lb

Compact Stiff Bridle Electrode Sub.
MBE 18 Length: 3.76 m Weight: 94.8 lb

Compact Inline Standoff B
MIS 141 Length: 0.65 m Weight: 15.4 lb

Compact Stiff Bridle Electrode Sub.
MBE 19 Length: 3.76 m Weight: 94.8 lb

Compact Inline Standoff B
MIS 129 Length: 0.65 m Weight: 15.4 lb

MBE 21 Compact Stiff Bridle Electrode
MLK 111 Length: 3.76 m Weight: 94.8 lb



Compact Inline Standoff B
MIS 135 Length: 0.65 m Weight: 15.4 lb

Compact Gamma
MCG 142 Length: 2.65 m Weight: 63.9 lb

Compact Memory Sub A.C
MMS 38 Length: 0.95 m Weight: 30.9 lb

Compact Inline Bowspring A
MIS 95 Length: 1.74 m Weight: 33.1 lb

Compact Swivel Head Adaptor F
SHA 64 Length: 0.83 m Weight: 26.5 lb

Compact Knuckle Joint
SKJ 101 Length: 0.66 m Weight: 24.3 lb

Compact Neutron
MDN 85 Length: 1.53 m Weight: 50.7 lb

Compact Density/Caliper
MPD 83 Length: 2.92 m Weight: 90.4 lb

Compact Knuckle Joint
SKJ 46 Length: 0.66 m Weight: 24.3 lb

Compact Swivel Head Adaptor F
SHA 73 Length: 0.83 m Weight: 26.5 lb

Compact Inline Bowspring A
MIS 24 Length: 1.74 m Weight: 33.1 lb

Compact Inline Standoff B
MIS 132 Length: 0.65 m Weight: 15.4 lb

Compact Upper Guard Sub.
MUG 30 Length: 2.74 m Weight: 68.3 lb

Compact Inline Standoff B
MIS 139 Length: 0.65 m Weight: 15.4 lb

Compact Laterolog Electrode Sub.
M/E 31 Length: 2.76 m Weight: 62.6 lb

32.22 m	GGCE - Borehole Corrected Gamma
31.33 m	CGXT - MCG External Temperature

- 26.17 m NPRL - Limestone Neutron Por.

23.48 m AVOL - Annular Volume
23.48 m HVOL - Hole Volume
23.48 m CLDC - Density Caliper
23.27 m DEN - Compensated Density

23.27 m DCOR - Density Correction
23.25 m PDPE - PE

13.35 m DDLL - Deep Laterolog

MLE 31 Length: 3.76 m Weight: 92.6 lb

13.35 m DSLL - Shallow Laterolog

Compact Inline Standoff B
MIS 138 Length: 0.65 m Weight: 15.4 lb

Compact Lower Guard Sub.
MLG 7 Length: 2.44 m Weight: 55.1 lb

Compact Inline Standoff B
MIS 73 Length: 0.65 m Weight: 15.4 lb

Compact Sonic
MSS 66 Length: 3.82 m Weight: 72.8 lb

4.60 m TR22 - 5' Transit Time
4.60 m TR11 - 4' Transit Time
4.60 m TR21 - 3' Transit Time
4.60 m TR12 - 6' Transit Time

Compact Inline Standoff B
MIS 127 Length: 0.65 m Weight: 15.4 lb

4.60 m DT35 - 3-5' Compensated Sonic

Compact Induction
MAI 39 Length: 3.29 m Weight: 48.5 lb

Tool Zero (0.44m from bottom)

Pressure Bung + Hole Finder
HFS 4 Length: 0.40 m Weight: 6.6 lb

All measurements relative to tool zero.

Total Length: 54.01 m Weight: 1265.5 lb



COMPANY	ESSO AUSTRALIA PTY.LTD
WELL	WKF W27A
FIELD	KINGFISH GDA94
PROVINCE/COUNTY	BASS STRAIT, VICTORIA
COUNTRY/STATE	AUSTRALIA

Elevation Kelly Bushing	metres	First Reading	3090.00	metres
Elevation Drill Floor	33.43 metres	Depth Driller	3093.00	metres
Elevation Ground Level	-76.13 metres	Depth Logger	3093.00	metres



DUAL LATEROLOG - GR
DENSITY - NEUTRON

